



### CRUISE INCLUSIONS:

- All ship board meals & accommodation
- Welcome address on first day by Polwarth Design & Senikai Spa
- 3 x Fashion & Beauty workshops with Polwarth Design & Senikai Spas
- Daily island stopovers & water activities
- Guided island, village & school tours
- Snorkelling & glass bottom boat tours
- Use of snorkelling equipment & mini gym
- Tropical island lovo feast & kava ceremony
- Entertainment
- Child minding (5-10yrs) - selected times
- Transfers from the ship to most Nadi & Denarau Island hotels

### FARES EXCLUDE:

Drinks, optional tours, transfers to the ship & services.

### FOR BOOKINGS & ENQUIRIES:

Contact Travel Marketing/  
Cruise World

PHONE: 09 917 4440,

EMAIL: [info@cruiseworld.co.nz](mailto:info@cruiseworld.co.nz)

WEBSITE: [www.cruiseworld.co.nz](http://www.cruiseworld.co.nz)

**CONDITIONS:** Available for sale until sold out. Limited cabins available at these prices. Once these have been sold prices revert to normal brochure fare prices. Space strictly limited. Prices listed are per person in NZ\$ and include all applicable taxes. All prices subject to currency exchange, fuel surcharges & credit card surcharges. Infants under 5 years are not recommended for this style of cruise and carried at Captain Cook's absolute discretion. 1 departure only. Airfares additional. All other conditions as per passenger cruise contract. Issue date: 3 Feb 2012



### 'Pamper Me' Yasawa Island Cruise

For the first time ever, Captain Cook Cruises have pleasure in offering a four night exclusive, indulgent "Pamper Me" cruise aboard "MV Reef Endeavour".

While cruising Yasawa Islands with its sheltered turquoise bays, islands with white sandy beaches and colourful reefs you can share life changing tips with fashion experts Cheryl Polwarth and Karen Matich who have dressed New Zealand women for the last 27 years along with beauty expert Debra Sadranu of Senikai Spas.

As well as experiencing the warmth and friendliness of local Fijians and their families, you can participate in fashion workshops that will challenge your comfort level by inspiring you to break rules, push your boundaries and also give you a fresh preview of the 2013/14 summer fashions. You can discover hair and makeup tips to flatter your face, shape and personality and learn about the benefits of sea minerals for eradicating cellulite and promoting weight loss. So gather your husband, friends and/or family and join us on this fun-filled, enlightening cruise!

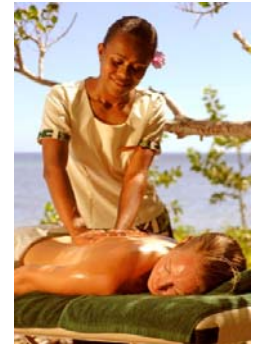
### WORKSHOPS included during the cruise

#### Polwarth Design

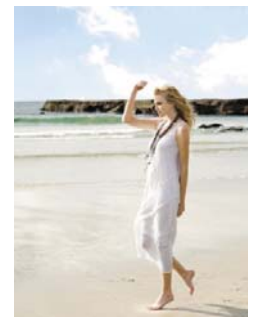
- \* How to lose 5 kilos without putting on your running shoes!!
- \* Body lining
- \* Fashion disasters and how to avoid them

#### Senikai Spas

- \* Skin types and preferred products
- \* Feel good – Detox & Elimination – the benefits of sea minerals for cellulite and weight loss and more
- \* Look Good – Make up & Colour codes, dos and don'ts of make up application.



**STRICTLY  
LIMITED  
SPACE  
AVAILABLE**



**4 Nights from NZ\$1319** per person twin share

Departing from Port Denarau, Tuesday, 12 June 2012 at 1.00pm.

Returning Port Denarau, Saturday, 16 June 2012 at 9am.

NZ\$ per person 4 night cruise	Cabin twn/dble	Stateroom twn/dble	Tabua Suite twn/dble
<b>Twin share</b>	1319	1839	2599
<b>Sole occupancy</b>	1649	2299	3899
<b>Bunk Triple/Quad share</b>	1055	n/a	n/a
<b>Child 5-17 yrs sharing with adult</b>	259	389	1299
<b>Infant 0-4yrs incl Nanny services</b>	429	779	n/a
<b>Separate child's Stateroom (max 2 children 5-17 yrs)</b>	n/a	435	n/a

*polwarth  
design*  
INSPIRING YOU

*Senikai Spas* <sup>Fiji</sup>  
rejuvenation and wellbeing

[www.polwarthdesign.co.nz](http://www.polwarthdesign.co.nz)  
Face Book: Polwarth Design

[www.fijisenikaispas.com](http://www.fijisenikaispas.com)

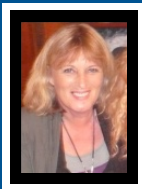


# Fiji Islands "PAMPER ME" Cruise

One  
Departure  
12 June  
2012



## OUR TEAM OF EXPERTS



STRICTLY LIMITED SPACE AVAILABLE ONLY!  
BOOK NOW TO AVOID DISSAPPOINTMENT

### Polwarth Design

Twins, Karen Match& Cheryl Polwart have been partners in a highly successful fashion boutique "Polwarth Design" for the last 25 years. Originally designing their own label, they branched out into retail clothing, specialising in creating new looks for women. We are passionate about educating women on their personal style through workshops, one on one styling consultations and fashion shows are there passion. They have travelled extensively through the North Island presenting their life changing workshops. Karen and Cheryl believe if you look good you feel good and to 'let the women you truly are evolve'  
[www.polwarthdesign.co.nz](http://www.polwarthdesign.co.nz)

### Senikai Spas

Debra Sadranu is undoubtedly the pioneer, founder and visionary of the Fiji Beauty and Spa Industry, warranting recognition for the outstanding contribution she has made, through the Beauty and Spa Industry, to the Fiji Tourist Industry by developing a product line matching world standard requirements. Her company not only specialises in spa operations but also in Bridal Hairstyling and Make-Up. Debra has been the trainer at Fiji's number 1 airline Air Pacific for a number of years of which she has specially developed a course in Grooming & Make-up application for all their cabin crew.  
[www.fijisenikaispas.com](http://www.fijisenikaispas.com)



[www.polwarthdesign.co.nz](http://www.polwarthdesign.co.nz)  
Face Book: Polwarth Design



[www.fijisenikaispas.com](http://www.fijisenikaispas.com)



FOR BOOKINGS & ENQUIRIES:

Contact Travel Marketing Cruise World

PHONE: 09 917 4440,

EMAIL: [info@cruiseworld.co.nz](mailto:info@cruiseworld.co.nz) WEBSITE: [www.cruiseworld.co.nz](http://www.cruiseworld.co.nz)

**CONDITIONS:** Available for sale until sold out. Limited cabins available at these prices. Once these have been sold prices revert to normal brochure fare prices. Space strictly limited. Prices listed are per person in NZ\$ and include all applicable taxes. All prices subject to **currency exchange**, fuel surcharges & credit card surcharges. Infants under 5 years are not recommended for this style of cruise and carried at Captain Cooks' absolute discretion. 1 departure only. Airfares additional. All other conditions as per passenger cruise contract. Issue date: 3 Feb 2012